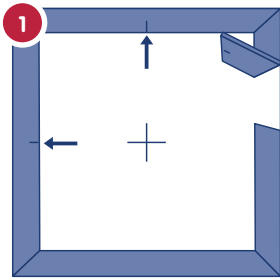
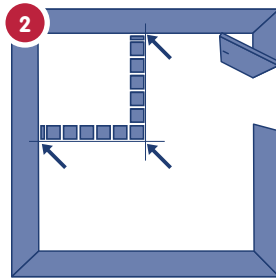


FLOOR TILING MADE EASY

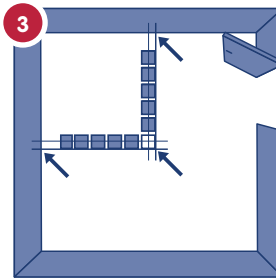
Follow these easy steps for the perfect floor tiling installation every time.



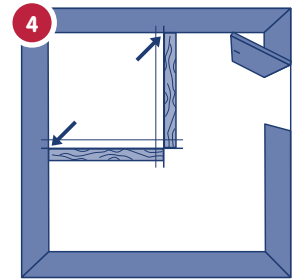
1 Determine the centre point of the room and mark it. Transfer these marks to the corresponding skirting boards or walls.



2 Starting at the centre mark, place a row of loose tiles along these lines. Cut tiles should be at least half a tile wide. If this is the case, position straight edges as per step 4. Remember to leave room for tile spacers, tile panel movement joints and perimeter joints.



3 If cut tiles are too small, move the centre tile so that the middle of the tile coincides with the centre mark on the floor. Repositioning the tiles will now ensure correct cuts.



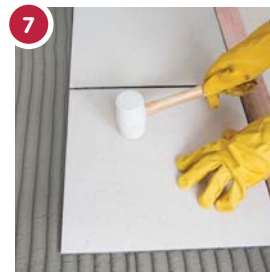
4 Mark the new starting point and transfer these marks to the corresponding skirting boards or walls. Position straight edges on these marks in both directions.



5 Start at the centre of the room. Use the appropriate TAL adhesive, like TAL Goldstar 6, and with the straight edge of a floor trowel, spread the adhesive onto the floor.



6 In a horizontal direction, notch the adhesive with the floor trowel or floor applicator. Do not spread more adhesive than can be tiled onto in approximately 15 minutes.



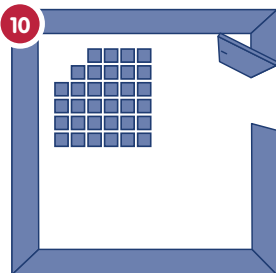
7 Use dry tiles. Butter the back of heavily ribbed tiles. Bed the tiles firmly into the adhesive using a rubber mallet.



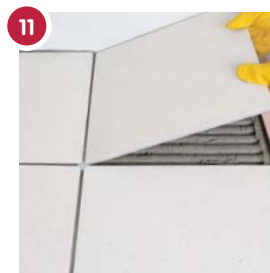
8 Use tile spacers to create uniform spacing. Remove before grouting. Never butt ceramic tiles hard up against each other.



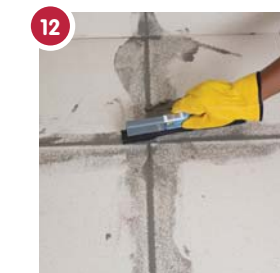
9 Lift the occasional tile to check for full coverage of adhesive on the back of the tile. No voids should occur underneath the tiles.



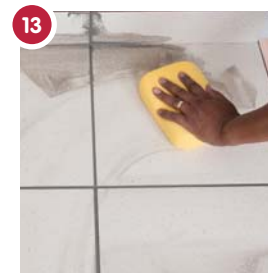
10 Tile out from the centre mark to the edges, keeping lines straight and tile spacing even. Leave cut tiles until last.



11 Measure and cut each tile to fill edges leaving room for the tile spacers. Butter the back of the tile with adhesive, place the cut edge towards the wall and bed firmly into place using a rubber mallet.



12 Allow the adhesive to dry before grouting. Use TAL Wall and Floor Grout or TAL Quarry Grout available in a variety of colours. Work grout well into joints with a rubber squeegee.



13 Remove the excess grout with a sponge. Allow the grout to dry and then polish with a dry cloth.



14 Provide movement joints in all corners. In large tiled areas keep these approximately 5m apart internally and 3m apart externally. Rake out joints and leave ungrouted. Fill with TAL Goldstar Sealmaster 1000 polyurathene joint sealant.