

tal[®]

THE PROFESSIONAL CHOICE

**LION PRIDE LIFESTYLE ESTATE
RESIDENTIAL DEVELOPMENT**
NIETGEDACHT



**THE SCIENCE
BEHIND
BEAUTIFUL SPACES**



Address: Cnr Malibongwe Dr & R114, Nietgedacht

Scope: Tile installation systems to interior walls, floors and showers of housing units, and to exterior floors within a large residential development.

Size: 40 000m²

CHALLENGES FACED

A large development with various installation areas which required a multi-level system to accommodate the needs of each application.

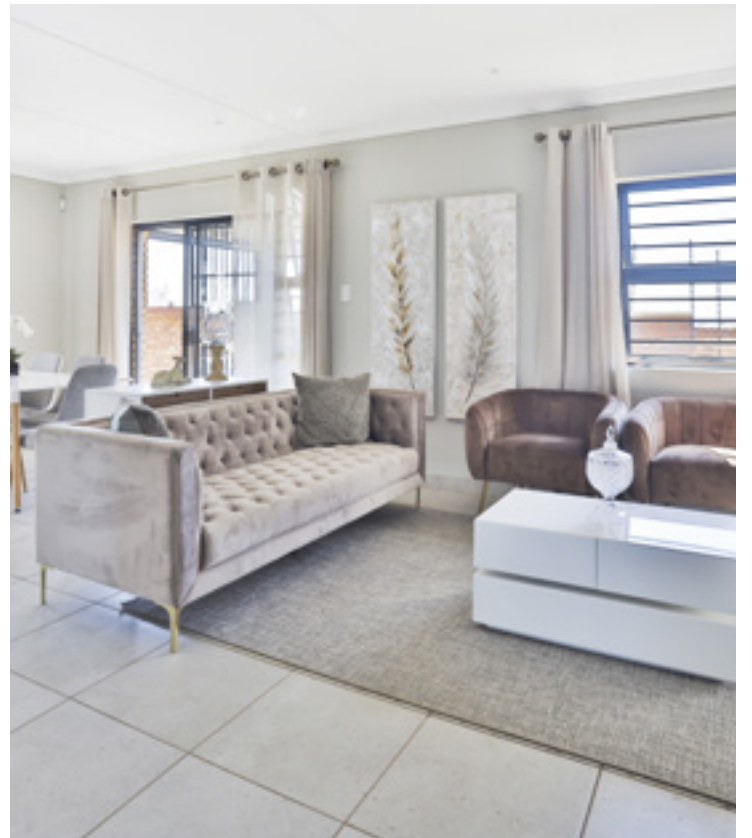
SOLUTION

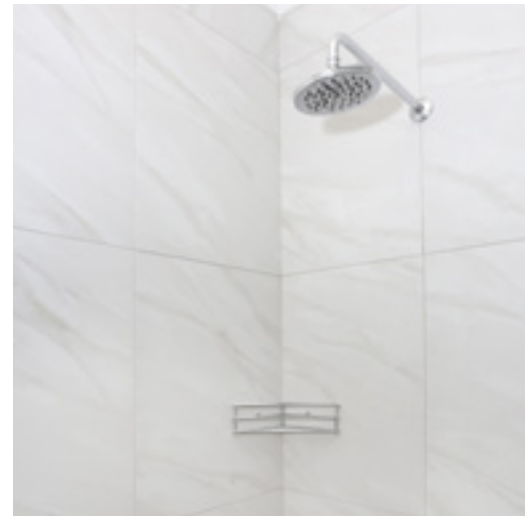
A multi-level system for fixing ceramic tiles to interior walls and floors

Level 1 - Adhesive system. The 300x600mm and 500x500mm glazed ceramic tiles were fixed to walls and floors respectively with TAL Probond, a modified standard-setting adhesive, with a recommendation to use TAL Porcelainset for areas where quicker access was required.

Level 2 - Grout system. TAL Wall & Floor Grout was used to fill tile joints in the wall and ground floor tile installation. The grout mix was modified with TAL Bond to fill the tile joints in the upstairs floor tiling installations, to accommodate the anticipated movement of a suspended slab.

Level 3 - Tile panel movement joints and perimeter joints. The lack of movement joints in a tile panel is a major cause of tile failure. Movement joints were specified in both directions at maximum 5 metre centres for interior surface bed applications, and in both directions at maximum 3 metre centres for suspended slab applications as well as around the perimeter of all the floors. TAL Sealmaster Cord and TAL Goldstar Sealmaster 1000 polyurethane joint sealant were recommended for filling and sealing of the tile panel movement joints and perimeter joints.





A multi-level system for fixing hardbody and porcelain tiles to walls and ceramic tiles to floors of waterproofed showers.

Level 1 - Adhesive system. The 600x600mm hardbody and porcelain tiles (walls) and cut glazed ceramic floor tiles were fixed onto a cementitious waterproofing compound with TAL Porcelainset, a quick-setting adhesive. This product was used as the setting time of standard-setting adhesives may be extended when applied to impervious waterproofed substrates. The tile adhesive was modified with TAL Bond for enhanced water resistance and flexibility.

Level 2 - Grout system. TAL Wall and Floor Grout modified with TAL Bond was used to grout the showers. The modified system delivers enhanced flexibility and water resistance to the installation.

A multi-level system for fixing ceramic tiles to exterior floors.



Level 1 - Adhesive system. The 500x500mm and 330x330mm glazed ceramic tiles were fixed onto the exterior wood-floated floors with TAL Probond. This modified standard-setting tile adhesive is formulated to incorporate flexibility, water resistance and increased strength, usually only achieved by the addition of latex admixtures.

Level 2 - Grout system. TAL Wall and Floor Grout modified with TAL Bond was used to grout the installation. The modified system delivers enhanced flexibility and water resistance to the installation.

Level 3 - Tile panel movement joints and perimeter joints. The lack of movement joints in a tile panel is a major cause of tile failure. Movement joints were specified in both directions at maximum 3 metre centres for exterior applications and around the perimeter of all floors. TAL Sealmaster Cord and TAL Goldstar Sealmaster 1000 polyurethane joint sealant were recommended for filling and sealing of the tile panel movement joints and perimeter joints.

INTERESTING FACTS

The Central Developments Property Group, is the largest residential property developer in Gauteng, with a proud tradition of delivering high-quality, secure developments with superb lifestyle and recreation facilities. The Lion Pride Lifestyle Estate, situated on Malibongwe Drive, near Fourways and Lanseria Airport, is a brand-new micro-city which will ultimately comprise eight individual security estates with 2 713 houses and 1 659 apartments totalling 4 372 units, a shopping centre, eco-park, a private school, jogging trails and children's play parks.



TAL is a division of Norcros SA and has been a trusted manufacturer and supplier of the highest quality materials to the construction industry for almost 50 years. Our products are designed for the harsh South African climate and to be fully compatible with each other. The TAL Laboratory is the first in Africa to gain ISO 17025 accreditation for 1348:2017 testing (tensile strength of cementitious tile adhesives). We supply free technical Methods and Materials Specifications for projects, and when correctly followed, projects can be awarded the TAL 10-year guarantee. When you consider these facts in combination with our commitment to exceptional customer service, technical advice and on-site support, it is clear that TAL is there for you at every level, to help make your project a success – from design to completion.

TAL TECHNICAL ADVICE CENTRE: 0860 000 TAL (825) or taltech@tal.co.za • www.tal.co.za

Johannesburg 011 206 9700 | Cape Town 021 386 1810 | Durban 031 579 2263

*TAL, TAL Probond, TAL Porcelainset, TAL Wall & Floor Grout, TAL Bond, TAL Sealmaster Cord and TAL Goldstar Sealmaster 1000 are registered trademarks of Norcros SA (Pty) Ltd.