

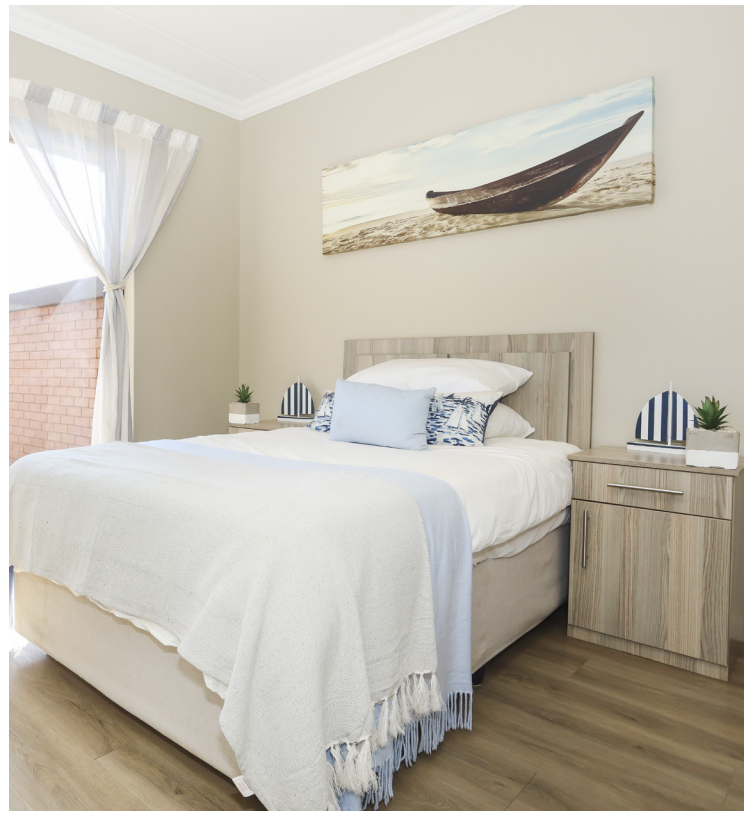
# tal<sup>®</sup>

THE PROFESSIONAL CHOICE

ROODEPARK ECO ESTATE  
RESIDENTIAL DEVELOPMENT  
ROODEPLAAT



THE SCIENCE  
BEHIND  
BEAUTIFUL SPACES



Address: 405 R513, Roodeplaat / Kameeldrift East - Phase 1

Scope: Multi-level system for installing luxury vinyl tiles (LVTs) to interior surface beds and suspended slabs within a residential development.

Size: 4 000m<sup>2</sup>

## CHALLENGES FACED

LVTs require a multi-level system to deliver a well-prepared, smooth and level surface to achieve the desired aesthetic finish and to ensure the sustainability of the installation.

## SOLUTION

A multi-level system for fixing luxury vinyl tiles (LVTs) to interior floors. Moisture testing of the substrate in ground floor units is recommended, together with the application of a suitable vapour barrier. The vapour barrier systems in the TAL range, namely TAL Vaporstop HB and TAL Vapourscreen WB, are moisture tolerant epoxy priming systems designed to prevent the passage of water vapour and moisture through concrete slabs.

### Level 1a -

Priming System for wood-floated floors. TAL Floor Primer, a modified latex primer was specified for these porous floors. This product is easily absorbed into a porous surface rather than forming a surface layer on the substrate.

### Level 1b -

Priming System for steel-floated floors. The surface was primed with TAL Primercoat, a ready-mix slurry primer coat. This product is light green in colour and dries to a grass-green colour for ease of reference.

### Level 2 -

Levelling system. TAL Screedmaster, a self-levelling and smoothing underlayment compound was applied to concrete surface beds and conventional reinforced concrete suspended slabs. The product produces a smooth, flexible and hard-wearing floor surface prior to the fixing of the LVT floor coverings, with minimum installation time.

### Level 3 -

Adhesive system. TAL Profix Plus LVT was used to fix the 184x1220x2mm LVT planks. The product is a solvent free, modified acrylic-based adhesive specifically developed for use with LVTs. It is designed for 'wet' lay installations, and the final glue line once set/cured is rigid, inhibiting lateral shear movement on the LVT planks once in service, thus reducing the possibility of 'gapping' between the planks over time.

## INTERESTING FACTS

Located in the Kameeldrift area on the R513 Cullinan Road, the Roodepark Eco Estate of approximately 68 hectares, is built around an eco-conservation area in which there are currently zebras, several deer species, as well as other small animals. The Estate boasts a variety of proteas and other indigenous trees and plants, and more than 60 bird species have been noted.





TAL is a division of Norccros SA and has been a trusted manufacturer and supplier of the highest quality materials to the construction industry for almost 50 years. Our products are designed for the harsh South African climate and to be fully compatible with each other; The TAL laboratory is the first in Africa to gain ISO 17025 accreditation for 1348:2017 testing (tensile strength of cementitious tile adhesives). We supply free technical Methods and Materials Specifications for projects, and when correctly followed, projects can be awarded the TAL 10-year guarantee. When you consider these facts in combination with our commitment to exceptional customer service, technical advice and on-site support, it is clear that TAL is there for you at every level, to help make your project a success – from design to completion.

**TAL TECHNICAL ADVICE CENTRE: 0860 000 TAL (825) or [taltech@tal.co.za](mailto:taltech@tal.co.za) • [www.tal.co.za](http://www.tal.co.za)**

**Johannesburg 011 206 9700 | Cape Town 021 386 1810 | Durban 031 579 2263**

\*TAL, TAL Floor Primer, TAL Screedmaster, TAL Vaporstop HB, TAL Vapourscreen WB and TAL Profix Plus LVT are registered trademarks of Norccros SA (Pty) Ltd.