

# METHOD STATEMENT

## TAL PROFIX PLUS

Revision Date : 2 December 2020



## GENERAL PURPOSE METHOD STATEMENT

### 1. LABOUR:

Application of Resilient Floor and Wall Coverings is a skilled operation and should only be carried out by experienced installers with the correct training. Application by unskilled labour is not recommended.

### 2. TOOLS & EQUIPMENT REQUIRED

- Broom & Heavy Duty Vacuum Cleaner
- Serrated Trowel (1.5mm or 3mm)
- **TAL Floor Primer** – primer for very porous surfaces
- **TAL Screedmaster** or **TAL Superscreed SL**– for levelling and smoothing of substrates
- **TAL Cleaning Solvent**, or a Neoprene Solvent

### 3. SUBSTRATE PREPARATION

The installation of Vinyl or Carpet floor coverings must not commence before the moisture content of the substrate (Concrete, Screed, Topping or Underlayment Compound) has been tested and deemed suitable for the application of the particular floor covering.

**Ideally, A M.V.E.R. (Moisture Vapour Emission Rate) Test should be carried out in accordance to ASTM F 1869-98.**

Should there be no damp proof membrane below a surface bed, or should prevailing moisture levels not attain 3% (50% RH) or less, then **TAL VaporStop HB** must be applied before the application of **TAL Profix**. **TAL VaporStop HB** is a moisture tolerant, 100% solids epoxy barrier coat that prevents the passage of water vapour and moisture through concrete slabs. **TAL Profix Plus** can be applied directly onto cured **TAL VaporStop HB**, within its Overcoating Window Period.

**TAL Profix Plus** is suitably designed for application onto concrete, screed, toppings, underlayment compounds, render, tiles, wood, vinyl and metal access flooring.

The substrate must be integrally sound (no crumbling, cracking, etc) and of a quality and consistency suitable to receive the selected Overlayment material.

The substrate must be clean and dry and free from all traces of surface laitance and contamination such as dust, dirt, waxes, oils, bitumen, old adhesives, paint, grease, weak cement screeds, shutter release and curing agents, sealing compounds, etc.

Bituminous fixative residues must be removed completely, or excess residues removed and the floor primed with **TAL Bitumen Primer**. Organic or fungal growth must be removed and the spores killed using an effective fungicide.

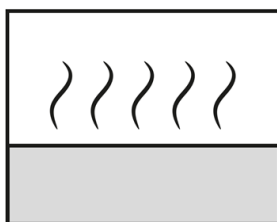
Where required, **TAL Superscreed**, **TAL Superscreed SL** or **TAL Screedmaster** Underlayment Compounds can be installed to achieve the required smooth, level finish suitable for the installation of the selected floor covering.

The floor must be thoroughly swept to remove all traces of dust and loose particles, taking care to remove the dust rather than redistribute it. (Vacuuming is preferred.)

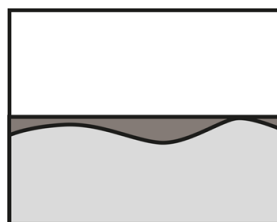


Paint, gypsum, skimcoat, bitumen, adhesive and waterproofing

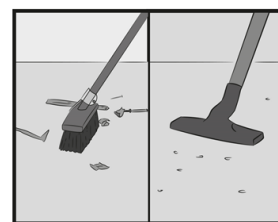
Remove all traces of residue completely.



Ensure prevailing moisture levels attain 3% (50% RH) or less.



Ensure surface is level and smooth with **TAL SCREEDMASTER** or **TAL SUPERSCREED SL**.



Sweep floor to remove dust, loose particles and surface contaminants. Vacuum cleaning is preferred.

Contact the **TAL Technical Advice Centre** on 0860 000 TAL(825), or e-mail [taltech@tal.co.za](mailto:taltech@tal.co.za)  
Johannesburg+27 (0)11 206 9700 | Cape Town +27 (0)21 386 1810 | Durban +27 (0)31 579 2263  
[www.tal.co.za](http://www.tal.co.za) TAL is a registered trademark of Norcros SA (Pty) Ltd

# METHOD STATEMENT

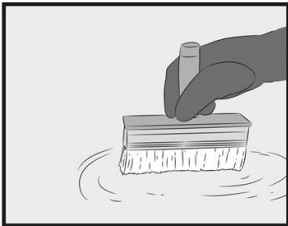
## TAL PROFIX PLUS

Revision Date : 2 December 2020



### 4. PRIMING

Very porous surfaces must be primed with a coat of **TAL Floor Primer**. The priming coat must be left to dry and must be firmly anchored to the substrate before applying **TAL Profix Plus**.



Prime porous surfaces with TAL FLOOR PRIMER and leave to dry.

### 5. APPLICATION

The floor covering should be allowed to acclimatise to the temperature of the installation area for a minimum of 48 hours.

Ensure surface is dry and dust-free. Contamination on the surface may have an adverse effect on both the finish and long-term performance of the floor covering.

**Shake/agitate container well before use. Do not dilute or adulterate in any way.**

**TAL Profix Plus** should be applied using a serrated trowel to ensure optimum transfer of adhesive, as follows:

**Vinyl tiles and sheeting and backed carpeting** - serrated trowel with triangular notches of 1.5mm x 1.5mm with 4mm centres

**Coarse, unbacked carpeting (eg needlepunch carpeting)** - serrated trowel with triangular notches of 3.0mm x 3.0mm with 4mm centres.

Apply the adhesive onto the clean, prepared substrate and allow the adhesive to flash off and become slightly tacky before applying the floor covering.

Press the floor covering into place and roll all flooring (**except cushion flooring**) with a 64kg three sectional flooring roller.

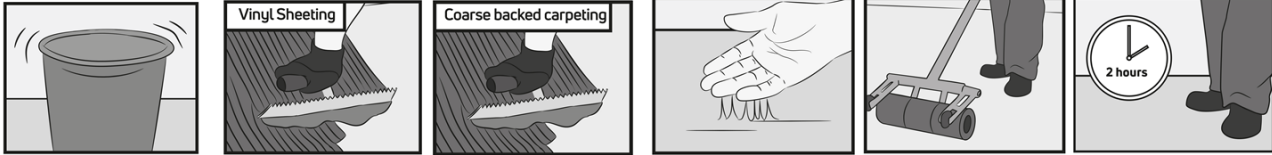
Adequate sealing of the interfaces between vinyl flooring and wall finishes is essential to minimise the risk of water/moisture ingress into the flooring installation,

Contact the TAL Technical Advice Centre on 0860 000 TAL(825), or e-mail [taltech@tal.co.za](mailto:taltech@tal.co.za)  
Johannesburg+27 (0)11 206 9700 | Cape Town +27 (0)21 386 1810 | Durban +27 (0)31 579 2263  
[www.tal.co.za](http://www.tal.co.za) TAL is a registered trademark of Norcross SA (Pty) Ltd

# METHOD STATEMENT

## TAL PROFIX PLUS

Revision Date : 2 December 2020



Shake/Agitate container well before use. Do not dilute or adulterate in any way.

Apply TAL PROFIX PLUS using a serrated trowel with triangular notches of 1.5mm x1.5mm with 4mm centres.

Apply TAL PROFIX PLUS using a serrated trowel with triangular notches of 3.0mmx3.0mm with 4mm centres.

Allow the TAL PROFIX PLUS adhesive to flash off and become slightly tacky before applying the floor covering.

Press the floor covering into place and roll all flooring (except cushion flooring) with 64kg three sectional flooring roller.

Wait 2 hours before exposure to light traffic, and 12-24 hours before exposure to full service conditions (depending on site and ambient conditions). Allow minimum 72 hours before exposure to water/cleaning procedures.

## 6. APPROXIMATE COVERAGE

Applied by 1.5mm Serrated Trowel :  $\pm 6.0\text{m}^2 / 1\ell$

Applied by 3mm Serrated Trowel :  $\pm 3.0\text{m}^2 / 1\ell$

Actual coverages will be determined by site conditions, workmanship, etc.

## 7. DRYING TIMES

Wait minimum 2 hours before exposure to light foot traffic, and 12 – 24 hours before exposure to full-service conditions (depending on site and ambient conditions).

Allow minimum 72 hours before exposure to water/cleaning procedures.

## 8. PACKAGING

20ℓ Plastic Containers

## 9. CLEANING

Spillages of wet product should be cleaned with a damp sponge before it dries.

Clean hands and equipment with warm, soapy water before the product dries.

Solvents (TAL Cleaning Solvent or a Neoprene solvent) are required to remove dried product.

## 10. SHELF LIFE & STORAGE

When stored in dry, internal conditions between 10°C and 25°C the product has a shelf life of 6 months from date of manufacture. Never store directly on a concrete floor.

Ensure containers are stored out of direct sunlight, in a well-ventilated area.

Ensure containers are tightly sealed when not in use, and packaging is secure and upright. Secure packaging when transporting to prevent accidental spillage.

Contact the TAL Technical Advice Centre on 0860 000 TAL(825), or e-mail [taltech@tal.co.za](mailto:taltech@tal.co.za)  
Johannesburg+27 (0)11 206 9700 | Cape Town +27 (0)21 386 1810 | Durban +27 (0)31 579 2263  
[www.tal.co.za](http://www.tal.co.za) TAL is a registered trademark of Norcros SA (Pty) Ltd

# METHOD STATEMENT

## TAL PROFIX PLUS

Revision Date : 2 December 2020



### 11. WARNING

Do not ingest. Use only as directed. Wear protective gloves and goggles. Work in a well-ventilated area. Dispose of this product in accordance with Local Regulations. Contact TAL for further Health & Safety information.

### 12. LIMITATIONS

Do not dilute or adulterate.

Do not apply in rain or wet conditions or at temperatures below 10°C.

### 13. HEALTH AND SAFETY

This product is for use only by experienced installers. It is potentially hazardous if not used correctly. Please refer to the Material Safety Data Sheet (MSDS) prior to the purchase and use of this product. E-mail [taltech@tal.co.za](mailto:taltech@tal.co.za) or call 0860 000 825 for a copy of the MSDS.

**This product contains solvents (less than 5%) – do not inhale. Work in well-ventilated areas. Do not ingest. Misuse or inhalation of vapours may cause eye-watering, weakness, fatigue, nausea, headaches or dizziness.**

Do not ingest. Use only as directed. Keep out of reach of children.

Installers should use the following Personal Protection Equipment :

- Solvent mask
- Eye protection (goggles)
- Gloves
- Rubber soled safety shoes
- Coveralls

Work in well-ventilated areas.

Dispose of this product in accordance with Local Regulations.

### 14. AUTHORIZED TECHNICAL SPECIALIST

Only TAL Authorized Technical Specialists are permitted to change any of the information in this data sheet or to provide written recommendations concerning the use of this product.

### 15. PRODUCT GUARANTEE

TAL products are manufactured and tested in accordance with TAL procedures, which are maintained in line with Quality Control System Standard ISO 9001, OSHAS 18001 and Environmental Management System ISO 14001. TAL products are guaranteed to be free from manufacturing defects and fit for design purposes. TAL guarantees the technical properties of their materials when used strictly in accordance with their materials and methods specifications for the particular project, and where the prescribed standard of workmanship is followed. However, we have no influence over specific site conditions and therefore, if in doubt, the user must always carry out sufficient tests to satisfy himself/herself that the product is suitable for the intended purpose. In special cases, obtain professional advice.

TAL shall not be liable for the standard of workmanship on site, or for any defects or damage due to external causes or factors beyond the control of TAL including, without limitation, unsound structures or foundations, building movement (cracking, creep, deflection, vibration, etc), design defects, earth tremor or other seismic disturbances, land slip, fire, flood or other immersion, or any products which have been adulterated, contaminated or misused in any way. Debonding due to cohesive failure within the substrate is not classified as product failure. The aforementioned list is not exhaustive.

**NOTE: We require timeous notification, in writing, of an alleged defect and the opportunity to assess and investigate the problem to our satisfaction prior to any remedial work whatsoever being carried out**

Contact the TAL Technical Advice Centre on 0860 000 TAL(825), or e-mail [taltech@tal.co.za](mailto:taltech@tal.co.za)  
Johannesburg+27 (0)11 206 9700 | Cape Town +27 (0)21 386 1810 | Durban +27 (0)31 579 2263  
[www.tal.co.za](http://www.tal.co.za) TAL is a registered trademark of Norcros SA (Pty) Ltd