

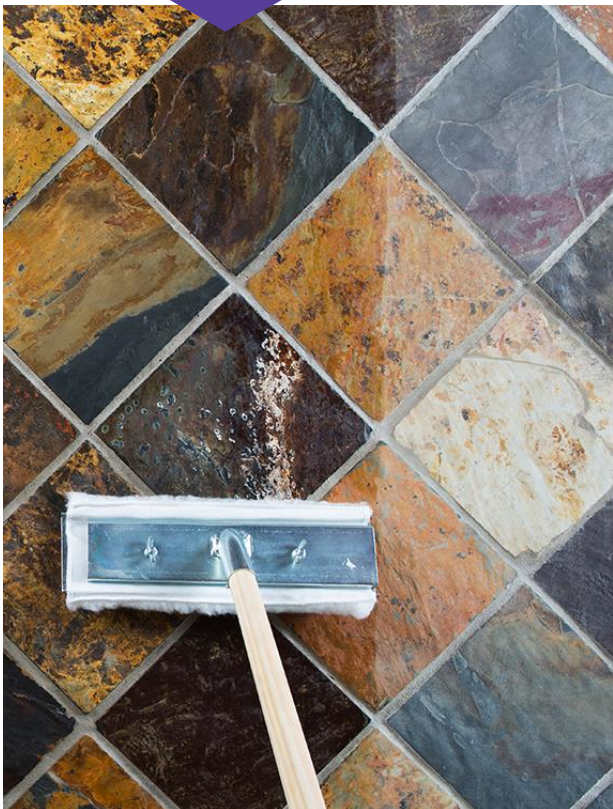
TECHNICAL DATA SHEET

GOLDSTAR[®] NATURAL STONE SEALER - MATT

SEALER

HARD
WEARING

A deep-penetrating acrylic sealer that seals and provides a durable, hard wearing matt finish to porous natural stone tiles



DESCRIPTION

TAL Goldstar Natural Stone Sealer - Matt is a one-part solvent based acrylic sealer designed to penetrate and bond onto natural stone tiles on walls and floors, creating a hard wearing and protective final finish. It is specially formulated to seal porous natural stone tiles, enhancing their natural colour.

TAL Goldstar Natural Stone Sealer - Matt is effective on all natural stone tiles including marble, slate, granite, limestone, quartzite, sandstone and travertine.

It can also be used on quarry and terracotta tiles.

Non-yellowing, it is suitable for interior and exterior floor and wall tile applications.

TAL Goldstar Natural Stone Sealer is also available in a Satin finish.

Note: This product is designed for the above-mentioned application only. TAL will not be liable for misuse or adulteration of the product.

FEATURES

- Enhances the natural tile colour
- Durable non-yellowing protection
- Suitable for all natural stone types



TECHNICAL DATA SHEET

GOLDSTAR® NATURAL STONE SEALER – MATT

Issue Date: 27 JANUARY 2025



TECHNICAL DATA:

Type	Sealer
Colour	Clear
Packaging	1L tin
Application Temperature Range (Ambient)	10°C - 30°C

CAUTION:

- Ensure that all surfaces to be sealed are completely clean and dry before applying TAL Goldstar Natural Stone Sealer - Satin.
- Do not flood coat - always apply thin coats.
- Do not allow to freeze.

PREPARATION:

The tiles should be thoroughly cleaned to remove any stains or polishes, waxes or sealants prior to sealing. Ensure that all tiles are completely dry and clean, free from dust, loose particles and surface contaminants.

Cleaning of tiles prior to sealing can be undertaken using TAL Goldstar Heavy Duty Tile Cleaner or TAL Goldstar Daily Tile Cleaner.

APPLICATION:

Ensure that all surfaces to be sealed are completely clean and dry.

To ensure effective coverage and optimum sealing, 2 coats of TAL Goldstar Natural Stone Sealer – Matt should be applied.

Apply the first coat onto the clean, dry tiles using an appropriate paint brush or sheep-skin applicator, ensuring an even and consistent application across the surface.

Allow to dry for a minimum of 2 hours for floor application and a minimum of 1 hour for wall applications, depending on ambient conditions.

Apply the second coat in the same manner, in a **cross-direction to the first coat**.

Do not flood coat - always apply thin coats.

MAINTENANCE CLEANING & SEALING:

For best results the sealed tiles should be cleaned using water and TAL Goldstar Daily Tile Cleaner.

Interior domestic areas require resealing every 2 years.

High traffic areas and exterior areas require resealing every 12 months.

DRYING TIMES:

Allow to dry for 24 hours, depending on ambient conditions, before exposing newly sealed floor tiles to traffic.

Wait a minimum of 48 hours before exposing newly sealed tiles to water or chemicals/cleaning agents.

APPROXIMATE COVERAGE:

Approximately 20m² / 1ℓ per coat, depending on the porosity of the tiles.

CLEANING:

Clean hands with warm, soapy water before the product dries.

Clean tools using TAL Epoxy Cleaning Fluid/ Gel or TAL Resins & Etching Cleaning Fluid.

IMPORTANT NOTICE: TAL believes the information on this sheet to be correct – but does not guarantee its accuracy or completeness. Conduct your own tests of this product to determine its suitability for intended use. User assumes all risks and liability during testing and use of this product. In special cases, obtain professional advice. The only obligation of TAL shall be to replace any of this product proved to be defective in material. TAL shall not be liable for any injury, loss or damage, direct or consequential, relating to the use or inability to use this product. Except as expressly provided above, all products sold, and samples furnished without any warranty of merchantability or any other warranty, express or implied. TAL reserves the right to change the information on this datasheet. Please contact the TAL Technical Advice Centre on taltech@tal.co.za or 0860 000 825 to ensure you have the latest version.

TECHNICAL DATA SHEET

GOLDSTAR® NATURAL STONE SEALER – MATT

Issue Date: 27 JANUARY 2025



PACKAGING:

Available in a 1ℓ tin.

STORAGE & SHELF LIFE:

Ensure lid is tightly sealed and packaging is secure and upright.

Secure product when transporting to prevent accidental spillage.

When stored in original sealed packaging in dry internal conditions between 10°C and 30°C and out of direct sunlight the product has a shelf life of 6 months from date of manufacture.

Never store directly on a concrete floor.

Do not allow to freeze.

WARNING:

Keep out of reach of children and pets. Do not ingest or inhale. If ingested – do not induce vomiting and seek medical help. Use only as directed. Do not mix with other chemicals. Avoid contact with skin and eyes. Wear appropriate PPE such as rubber gloves, eye protection and a face mask when using this product. Work in well-ventilated areas only. Dispose of this product in accordance with Local Regulations. Contact TAL for further Health & Safety information.

TAL TECHNICAL ADVICE CENTRE:

For advice or a detailed Materials and Methods Specification contact the TAL Technical Advice Centre on 0860 000 TAL(825), or e-mail taltech@tal.co.za

Branches: Gauteng (011) 206-9700; Cape (021) 386-1810; Natal (031) 579-2263

NB: Ensure you have the latest version of this data sheet.

PRODUCT PERFORMANCE GUARANTEE:

TAL products are manufactured and tested to TAL procedures, which are maintained in line with Quality Control System Standards ISO 9001 and ISO 45001, and Environmental Management System ISO 14001. TAL products are guaranteed to be free from manufacturing defects and fit for design purposes.

Any guarantee with regard to the performance of **TAL Goldstar Natural Stone Sealer - Satin** will be subject to the professional and practical application of the product in accordance with the instructions on the packaging and in the technical data sheet.

However, we have no influence over specific site conditions and therefore, if in doubt, the user must always carry out sufficient tests to satisfy himself/herself that the product is suitable for the intended purpose. In special cases, obtain professional advice.

NOTE: We require timeous notification, in writing, of an alleged defect and the opportunity to assess and investigate the problem to our satisfaction *prior* to any remedial work whatsoever being carried out.

IMPORTANT NOTICE: TAL believes the information on this sheet to be correct – but does not guarantee its accuracy or completeness. Conduct your own tests of this product to determine its suitability for intended use. User assumes all risks and liability during testing and use of this product. In special cases, obtain professional advice. The only obligation of TAL shall be to replace any of this product proved to be defective in material. TAL shall not be liable for any injury, loss or damage, direct or consequential, relating to the use or inability to use this product. Except as expressly provided above, all products sold, and samples furnished without any warranty of merchantability or any other warranty, express or implied. TAL reserves the right to change the information on this datasheet. Please contact the TAL Technical Advice Centre on taltech@tal.co.za or 0860 000 825 to ensure you have the latest version.